

A NEW CENTIPEDE AND TWO NEW MILLIPEDES FROM THE PEARL ISLANDS, COLOMBIA

BY RALPH V. CHAMBERLIN
University of Utah, Salt Lake City

In a small collection of centipeds and millipeds made by Dr. Robert C. Murphy upon San Jose in the Pearl Islands group, located in the Bay of Panama, are representatives of four species of which three here described are new. In addition to the specimens of the new forms there was an example of the chilopod *Cupipes unguatus* (Meinert). The types of the new species are in the American Museum of Natural History.

CHILOPODA

Pselliodes margarites Chamberlin, new species

The dorsum chocolate colored with a narrow median longitudinal yellow or pale orange stripe, the orange tinge more pronounced on the saddles and the color lighter along margins in front of saddles; the median stripe narrower across and down front of head, a narrow light branch diverging obliquely cephaloectad to run along inner margin of eye and then forward. On some of the tergites a few light submarginal flecks on each side. Femora of legs with three chocolate colored annuli which are incomplete above, the annulus at distal end narrow. Tibia with two broad annuli and a very narrow annulus at each end. Metatarsi chocolate colored excepting a submedian light annulus and one at distal end. Tarsi of anterior legs with first division dark, with narrow light annuli at articulations of segments, the distal division light; on posterior legs the entire tarsi more or less light.

First flagellum of antennae typically with 78 articles, the second with above 170, the tips in the types being broken off.

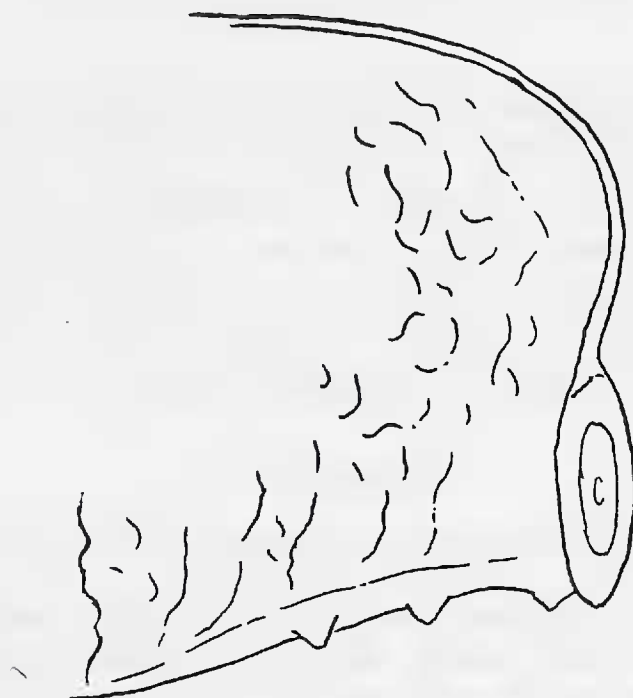
First tarsus of first legs composed of 16 articles, the second of about 45. First tarsus of second legs with 17 articles, the second with 45. First tarsus of eighth legs composed of 11 articles, the second of about 42.

The caudal margin of the anterior stoma-bearing tergites widely and but moderately incurved, but that, e.g. of the sixth tergite, more narrowly and acutely excavated, with stoma projecting into the excavation. Last tergite with caudal margin rounded, flattened or straight in middle region.

The proximal articles of the female gonopods long and cylindrical, sub-parallel or with inner distal angles nearly touching; each bearing at its disto-mesal angle a conspicuous patch of short stiff setae; distal articles or claws broken off in the holotype.

Length, about 23 mm.

Locality. PEARL ISLANDS: SAN JOSE ID. One specimen taken by Dr. R. C. Murphy (No. 7757).



Chondrodesmus murphyi Chamberlin, n. sp. Tenth right keel.

Somewhat suggesting the Colombian *P. colombiana* Chamberlin. Aside from differences in details of color pattern, it may be distinguished by the differences in the posterior margins of the tergites, the excavations on the sixth tergite, for example, being obviously deeper and more acute with the stoma projecting into the excavation instead of being free from it.

DIPLOPODA

Diaporus margarites Chamberlin, new species

General color brown, with narrow darker annuli more distinct above. Legs yellow of a slightly ferruginous cast.

A median sulcus across vertex joining the usual fine impressed line running between the eyes. Frontal and clypeal areas of head smooth. Eyes with inner angle acute; separated by more than the long diameter.

Collum with lower ends abruptly inflected below a thickened, cariniform ridge, the inflected portion crossed by several (2 or 3) sharply impressed longitudinal sulci.

Tergites above densely punctate, crossed by fine striae below level of pores. The anal tergite moderately depressed transversely in front of the rounded posterior middle process, no tuberculiform process being set off.

The last ventral plate wide from side to side but short in the cephalocaudal direction, the anterior margin over the middle part gently convex, not at all angled, the curved lateral ends slenderly acute.

Number of segments, 56.

Diameter, 4 mm.

Locality. PEARL ISLANDS: SAN JOSE, ID. Two females taken by Dr. R. C. Murphy.

In general features apparently related to *D. chiriquensis* (Pocock) of Panama (Volcan de Chiriqui), but a smaller form in which the lower ends of the collum are much less strongly inflected.

Chondrodesmus murphyi, Chamberlin, new species

Dorsum brown or light chestnut of a somewhat pink tinge; a median longitudinal line and the keels light. Legs light yellow or nearly white in the holotype.

Dorsum strongly convex with the keels low down. Dorsal surface of tergites roughened with coriaceous lines and markings but without series of definite tubercles.

Keels obviously less than half the width of the dorsum. Keels of second and third segments shorter than those of fourth and fifth, their posterior angles subrectangular. Angles of subsequent keels a little produced. Those of 17th and 18th much more strongly produced. Posterior margins of keels of second, third and fourth with a slight, low and obtuse tooth. Posterior margin of fifth keel with a single well developed tooth, that of following keels with two teeth, or on some with a third tooth adjacent to the outer angle as shown in the figure which also shows the form of the pore swelling.

Length, 42 mm.; width, 9 mm.

Locality. PEARL ISLANDS: SAN JOSE, ID. One female taken by Dr. R. C. Murphy (No. 7105).

This form seems quite distinct from related Central American species in the size and form of the keels and in the teeth on the caudal margins of these.